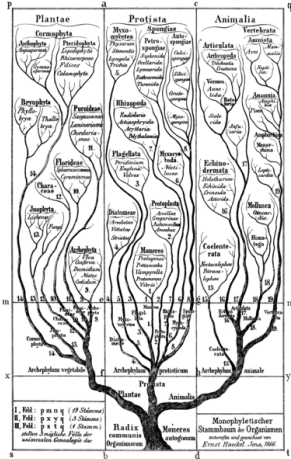


Proclaiming Evidence for Truth

THIS WEEK'S CREATION MOMENT

The Evolutionary Tree of Life Is Dying



Read John 11:25

We are all familiar with the evolutionary tree of life. It is supposed to depict how life began as a single-celled organism and, over immense periods of time, mutated into all the various forms of life we see today. New genetic studies, however, simply don't support this evolutionary tree.

Those of us who accept young earth creationism are not the only ones who are beginning to notice this problem. Creatures that are completely unrelated, according to the evolutionary tree, have very similar genes. More often than not, DNA information disagrees with a creature's supposed lineage as it is presented on the evolutionary tree

of life. Very different creatures, unrelated according to the evolutionary tree, develop from very similar genes. Our genetic knowledge of creatures is most complete with the simpler organisms. Even evolutionists have admitted that microorganisms without a nucleus do not fit into any kind of evolutionary tree. The facts are killing the evolutionary tree of life. Some evolutionists are admitting that the history of life cannot be represented as a tree. Some even ask whether the history of life can ever be known with any certainty.

In short, the new genetic information we are rapidly accumulating supports the Bible's teaching that each kind of creature was separately created. New genetic information shows that there is not one trunk to the tree of life. The only real source of life is our victorious, risen Savior, Jesus Christ.

Prayer: Lord, thank You for giving me life, especially eternal life. Amen.

References: Creation Matters (ICR), 5-6/00, pp. 1-2, "The DNA Disaster."

© 2010, Creation Moments. Churches may freely copy these bulletin inserts.

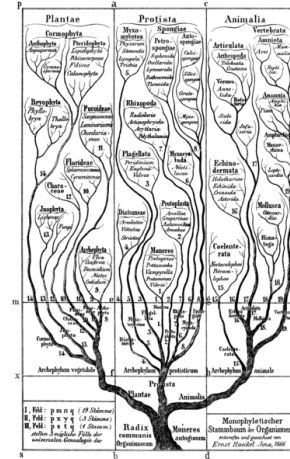
CREATION MOMENTS, INC.

P. O. Box 839 • Foley, MN 56329 • 800-422-4253
To receive our free Daily Creation Moment e-mail, visit www.creationmoments.com

Proclaiming Evidence for Truth

THIS WEEK'S CREATION MOMENT

The Evolutionary Tree of Life Is Dying



Read John 11:25

We are all familiar with the evolutionary tree of life. It is supposed to depict how life began as a single-celled organism and, over immense periods of time, mutated into all the various forms of life we see today. New genetic studies, however, simply don't support this evolutionary tree.

Those of us who accept young earth creationism are not the only ones who are beginning to notice this problem. Creatures that are completely unrelated, according to the evolutionary tree, have very similar genes. More often than not, DNA information disagrees with a creature's supposed lineage as it is presented on the evolutionary tree

of life. Very different creatures, unrelated according to the evolutionary tree, develop from very similar genes. Our genetic knowledge of creatures is most complete with the simpler organisms. Even evolutionists have admitted that microorganisms without a nucleus do not fit into any kind of evolutionary tree. The facts are killing the evolutionary tree of life. Some evolutionists are admitting that the history of life cannot be represented as a tree. Some even ask whether the history of life can ever be known with any certainty.

In short, the new genetic information we are rapidly accumulating supports the Bible's teaching that each kind of creature was separately created. New genetic information shows that there is not one trunk to the tree of life. The only real source of life is our victorious, risen Savior, Jesus Christ.

Prayer: Lord, thank You for giving me life, especially eternal life. Amen.

References: Creation Matters (ICR), 5-6/00, pp. 1-2, "The DNA Disaster."

© 2010, Creation Moments. Churches may freely copy these bulletin inserts.

CREATION MOMENTS, INC.

P. O. Box 839 • Foley, MN 56329 • 800-422-4253
To receive our free Daily Creation Moment e-mail, visit www.creationmoments.com